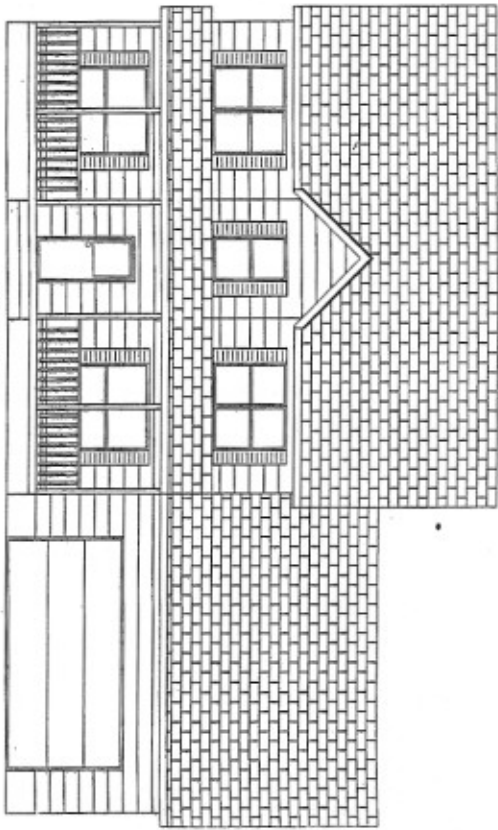


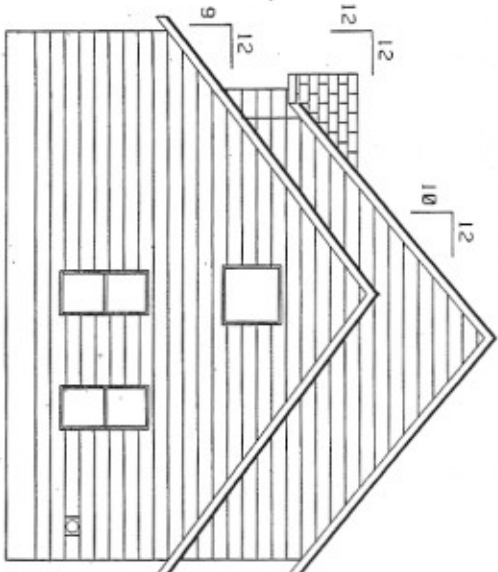
# 801 Selby Heights Dr.

LOT 1234124

801 Selby Heights Dr



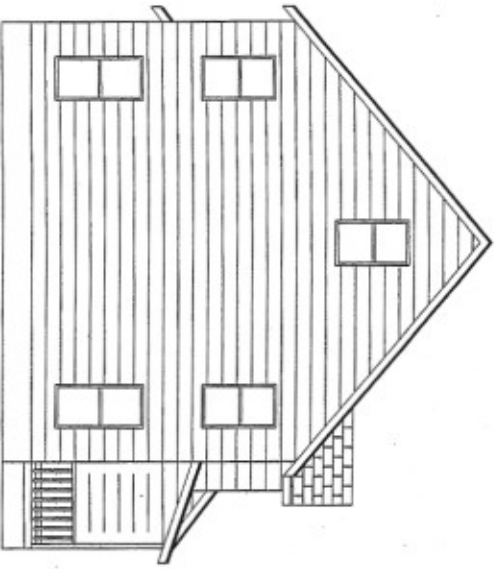
FRONT VIEW



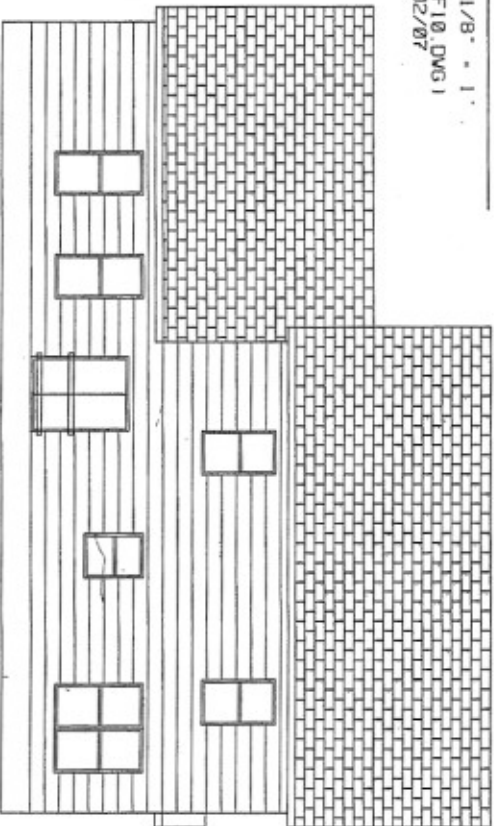
RIGHT VIEW

## ELEVATION VIEWS

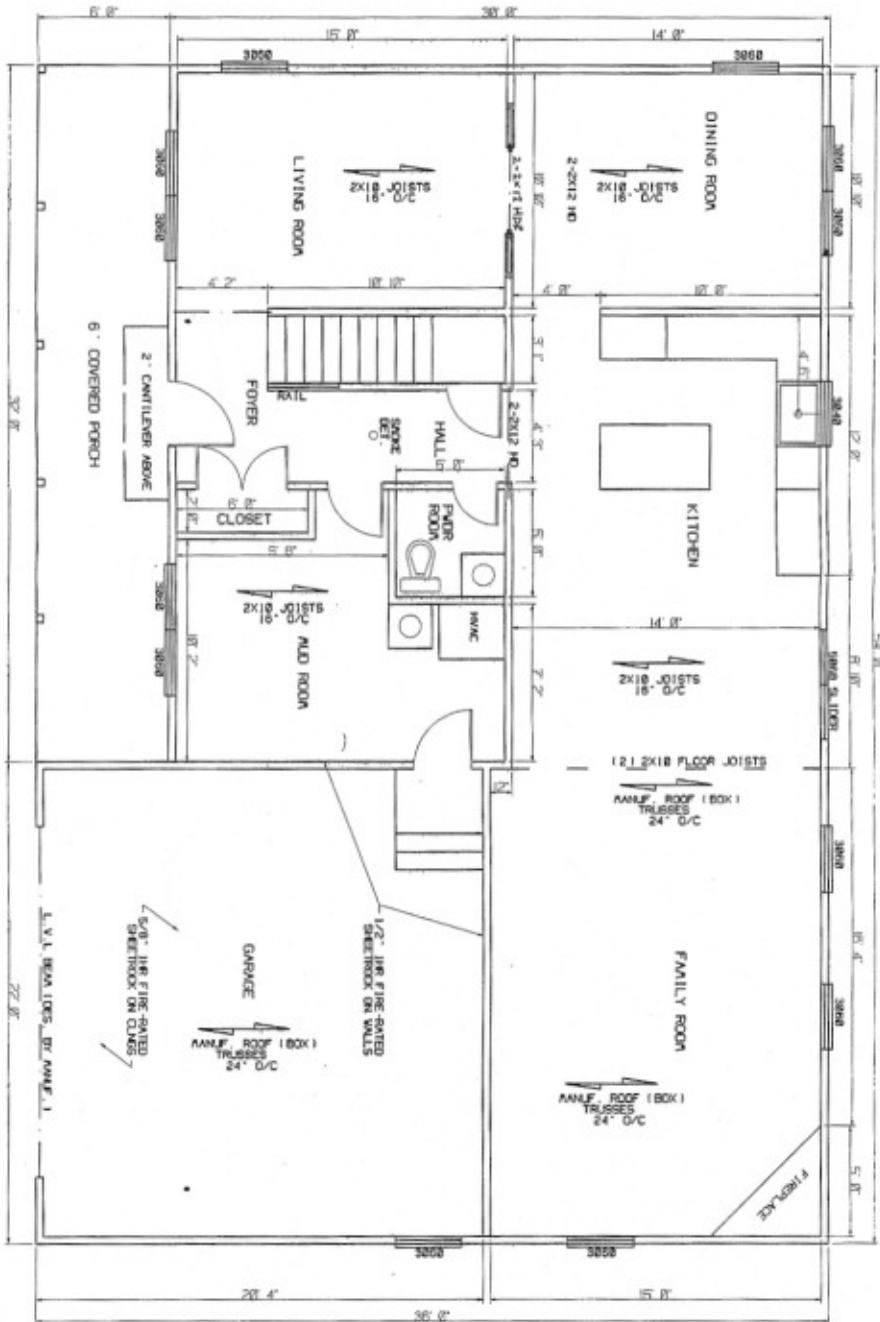
SCALE: 1/8" = 1'  
136X54/F10.DWG 1  
3/02/07



LEFT VIEW

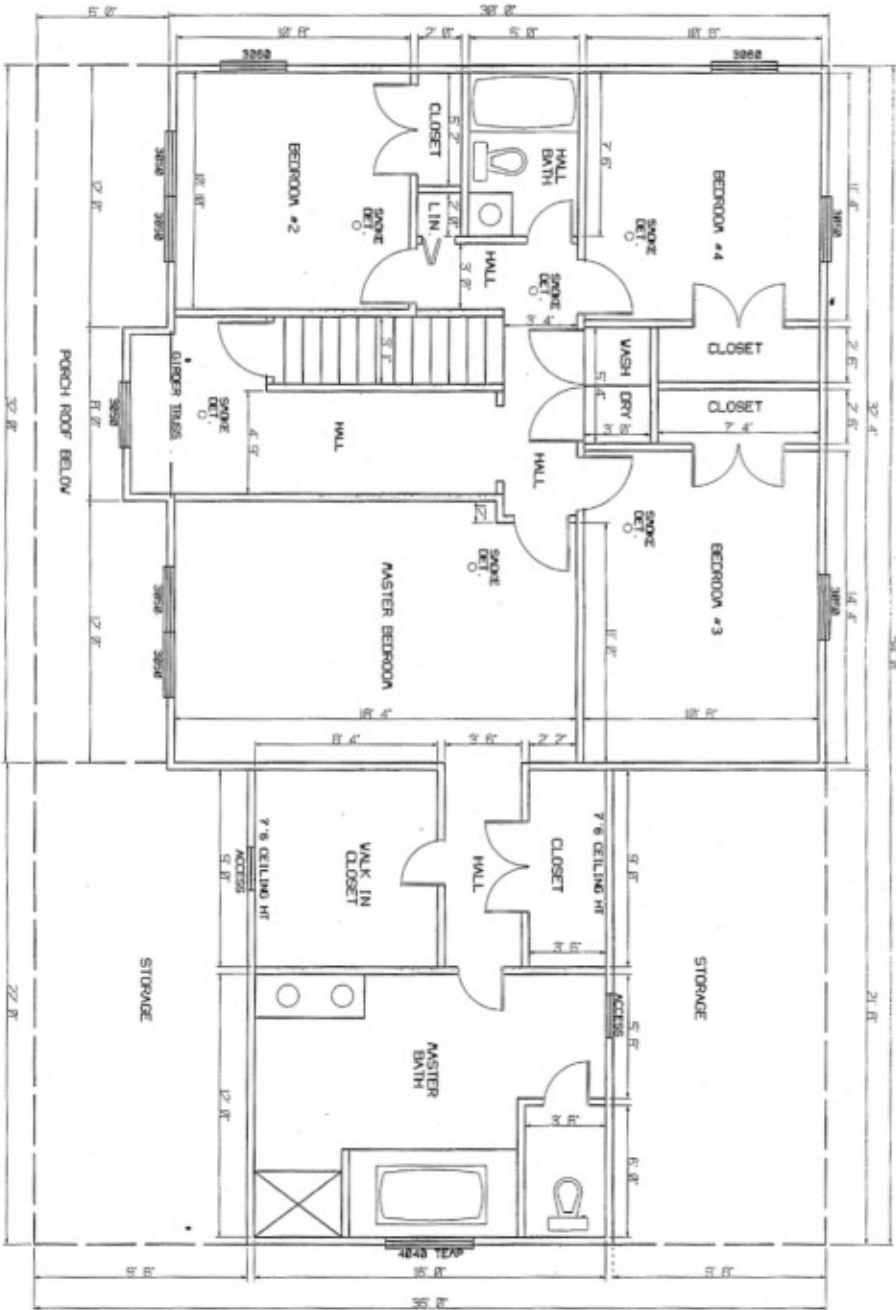


REAR VIEW



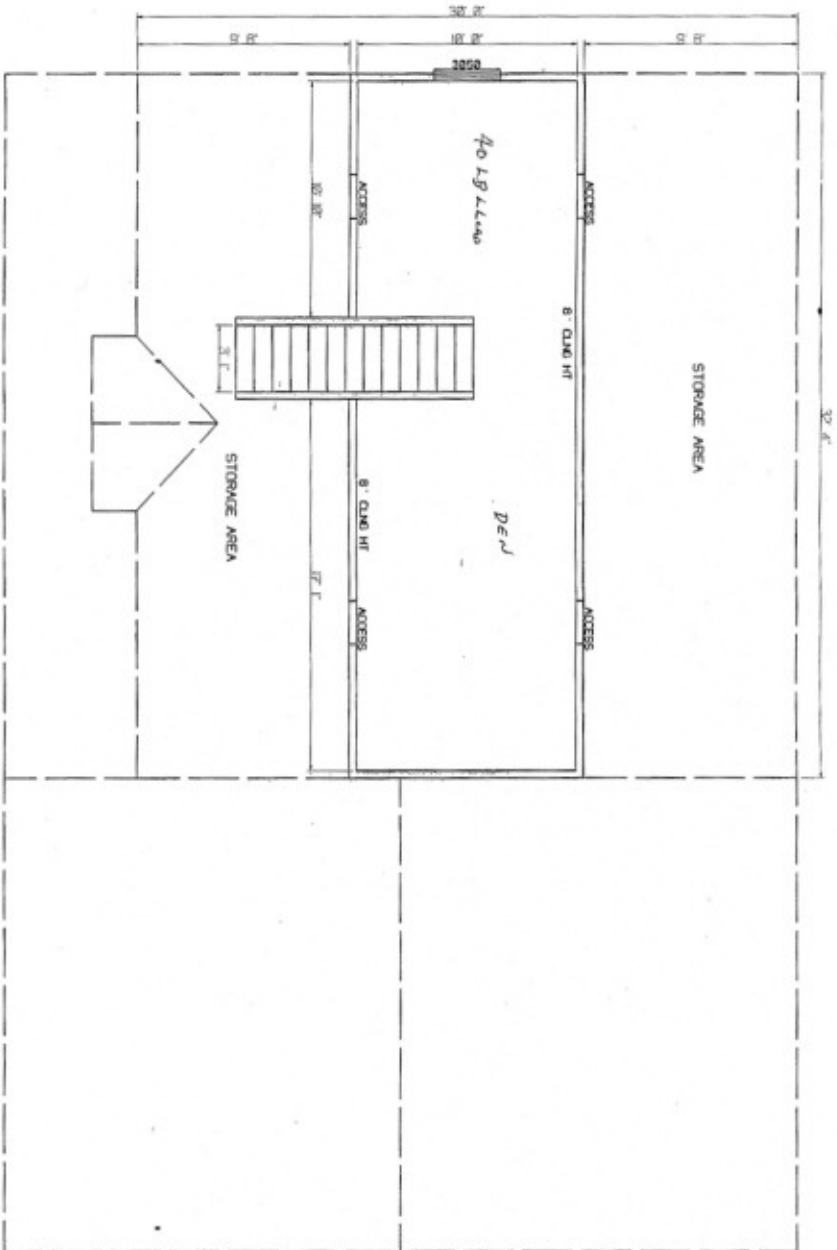
FIRST FLOOR PLAN

SCALE: 3/16" = 1'  
 38X54P18 DWG  
 2/21/87



SECOND FLOOR PLAN

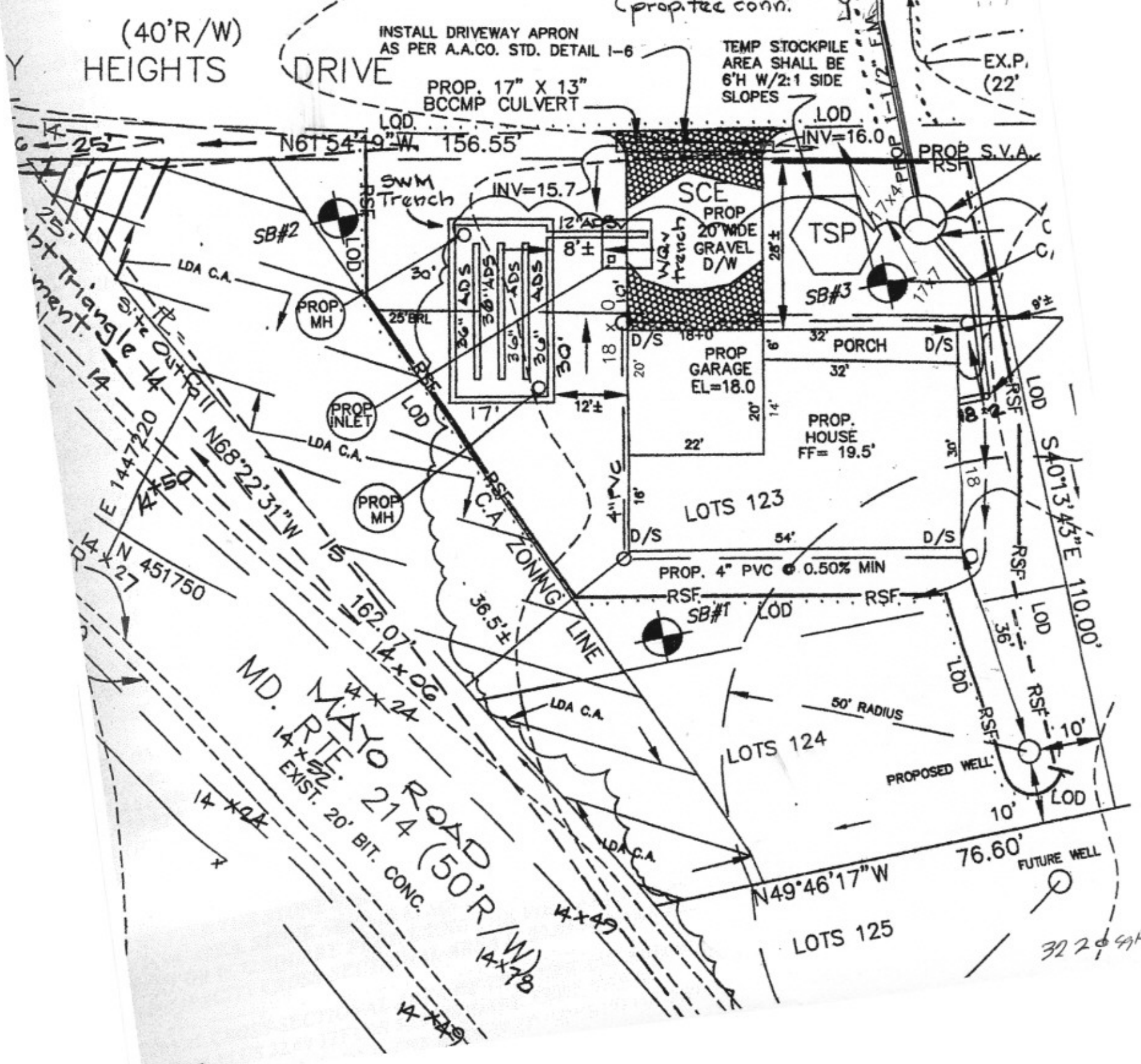
SCALE: 3/16" = 1'  
 35/10/4/18 DWG  
 3/18/78



ATTIC FLOOR PLAN

SCALE: 3/16" = 1'  
 30X54P18.DWG  
 3/02/07

AND Under G# 02013052 permit construction of sewer improvements install 10 L.F. 1-1/2" SDR-21 PVC pipe and connect to prop. terminal flushing connection and REMOVE 90° elbow with tee conn. at SVA to exist. house.



(40'R/W) HEIGHTS DRIVE

INSTALL DRIVEWAY APRON AS PER A.A.CO. STD. DETAIL I-6

PROP. 17" X 13" BCCMP CULVERT

TEMP STOCKPILE AREA SHALL BE 6'H W/2:1 SIDE SLOPES

prop. tee conn.

EXIST 1-1

EX.P. (22')

LOD. N61°54'49"W 156.55'

LOD. INV=16.0

PROP. S.V.A. RSF

SWM Trench

INV=15.7

SCE PROP. 20' WIDE GRAVEL D/W

TSP

SB#2

SB#3

PROP. MH

PROP. INLET

PROP. MH

PROP. GARAGE EL=18.0

PORCH

PROP. HOUSE FF=19.5'

LOTS 123

PROP. 4" PVC @ 0.50% MIN

SB#1

LOTS 124

PROPOSED WELL

76.60' FUTURE WELL

LOTS 125

32 2' 9" FT

MD. MAYO ROAD (50'R/W) EXIST. 20' BIT. CONC.

Various bearings and distances: N61°54'49"W 156.55', N68°22'31"W 15', N49°46'17"W 76.60', E 144°7'22" 14x20, N 45°17'50" 14x27, N 14°x24, N 14°x29, N 14°x49, N 14°x78, N 14°x94, N 14°x106, N 14°x149, N 14°x178, N 14°x214, N 14°x249, N 14°x279, N 14°x319, N 14°x359, N 14°x399, N 14°x439, N 14°x479, N 14°x519, N 14°x559, N 14°x599, N 14°x639, N 14°x679, N 14°x719, N 14°x759, N 14°x799, N 14°x839, N 14°x879, N 14°x919, N 14°x959, N 14°x999, N 14°x1039, N 14°x1079, N 14°x1119, N 14°x1159, N 14°x1199, N 14°x1239, N 14°x1279, N 14°x1319, N 14°x1359, N 14°x1399, N 14°x1439, N 14°x1479, N 14°x1519, N 14°x1559, N 14°x1599, N 14°x1639, N 14°x1679, N 14°x1719, N 14°x1759, N 14°x1799, N 14°x1839, N 14°x1879, N 14°x1919, N 14°x1959, N 14°x1999, N 14°x2039, N 14°x2079, N 14°x2119, N 14°x2159, N 14°x2199, N 14°x2239, N 14°x2279, N 14°x2319, N 14°x2359, N 14°x2399, N 14°x2439, N 14°x2479, N 14°x2519, N 14°x2559, N 14°x2599, N 14°x2639, N 14°x2679, N 14°x2719, N 14°x2759, N 14°x2799, N 14°x2839, N 14°x2879, N 14°x2919, N 14°x2959, N 14°x2999, N 14°x3039, N 14°x3079, N 14°x3119, N 14°x3159, N 14°x3199, N 14°x3239, N 14°x3279, N 14°x3319, N 14°x3359, N 14°x3399, N 14°x3439, N 14°x3479, N 14°x3519, N 14°x3559, N 14°x3599, N 14°x3639, N 14°x3679, N 14°x3719, N 14°x3759, N 14°x3799, N 14°x3839, N 14°x3879, N 14°x3919, N 14°x3959, N 14°x3999, N 14°x4039, N 14°x4079, N 14°x4119, N 14°x4159, N 14°x4199, N 14°x4239, N 14°x4279, N 14°x4319, N 14°x4359, N 14°x4399, N 14°x4439, N 14°x4479, N 14°x4519, N 14°x4559, N 14°x4599, N 14°x4639, N 14°x4679, N 14°x4719, N 14°x4759, N 14°x4799, N 14°x4839, N 14°x4879, N 14°x4919, N 14°x4959, N 14°x4999, N 14°x5039, N 14°x5079, N 14°x5119, N 14°x5159, N 14°x5199, N 14°x5239, N 14°x5279, N 14°x5319, N 14°x5359, N 14°x5399, N 14°x5439, N 14°x5479, N 14°x5519, N 14°x5559, N 14°x5599, N 14°x5639, N 14°x5679, N 14°x5719, N 14°x5759, N 14°x5799, N 14°x5839, N 14°x5879, N 14°x5919, N 14°x5959, N 14°x5999, N 14°x6039, N 14°x6079, N 14°x6119, N 14°x6159, N 14°x6199, N 14°x6239, N 14°x6279, N 14°x6319, N 14°x6359, N 14°x6399, N 14°x6439, N 14°x6479, N 14°x6519, N 14°x6559, N 14°x6599, N 14°x6639, N 14°x6679, N 14°x6719, N 14°x6759, N 14°x6799, N 14°x6839, N 14°x6879, N 14°x6919, N 14°x6959, N 14°x6999, N 14°x7039, N 14°x7079, N 14°x7119, N 14°x7159, N 14°x7199, N 14°x7239, N 14°x7279, N 14°x7319, N 14°x7359, N 14°x7399, N 14°x7439, N 14°x7479, N 14°x7519, N 14°x7559, N 14°x7599, N 14°x7639, N 14°x7679, N 14°x7719, N 14°x7759, N 14°x7799, N 14°x7839, N 14°x7879, N 14°x7919, N 14°x7959, N 14°x7999, N 14°x8039, N 14°x8079, N 14°x8119, N 14°x8159, N 14°x8199, N 14°x8239, N 14°x8279, N 14°x8319, N 14°x8359, N 14°x8399, N 14°x8439, N 14°x8479, N 14°x8519, N 14°x8559, N 14°x8599, N 14°x8639, N 14°x8679, N 14°x8719, N 14°x8759, N 14°x8799, N 14°x8839, N 14°x8879, N 14°x8919, N 14°x8959, N 14°x8999, N 14°x9039, N 14°x9079, N 14°x9119, N 14°x9159, N 14°x9199, N 14°x9239, N 14°x9279, N 14°x9319, N 14°x9359, N 14°x9399, N 14°x9439, N 14°x9479, N 14°x9519, N 14°x9559, N 14°x9599, N 14°x9639, N 14°x9679, N 14°x9719, N 14°x9759, N 14°x9799, N 14°x9839, N 14°x9879, N 14°x9919, N 14°x9959, N 14°x9999

# Features



**Kerry Muse**  
410-956-3500

## GENERAL FEATURES

- Engineered roof trusses
- Six panel colonial style interior doors
- Continuous formed aluminum gutters
- Architectural 30-year roof shingles
- TV & Phone prewires all bedrooms
- High Speed Cable Wiring
- Fan prewires all bedrooms
- Washer & Dryer connections
- 2 1/2 baths with fiberglass tub and shower units
- Smoke detectors
- Low maintenance vinyl siding
- Luxurious wall-to-wall carpeting
- Blacktop driveway
- Seeded lawn

## ENERGY PACKAGE

- 13 Seer Trane heat pump
- Gas fireplace
- Fiberglass insulation
- Ceilings R-30
- Exterior walls R-13
- Ridge vent high efficiency attic ventilation
- Insulated vinyl clad aluminum windows
- 47-gallon Lowboy hot water heater
- Garage is drywalled

## KITCHEN PACKAGE

- Designer oak cabinets
- Granite countertops
- Stainless steel sink
- Flat top range
- Kenmore dishwasher
- Kenmore 18 cubic ft. refrigerator with ice maker
- Built-in microwave
- Quality no-wax vinyl flooring

*Jim Robinson, Builder*  
*Real Estate General Ltd.*

MHBR 151

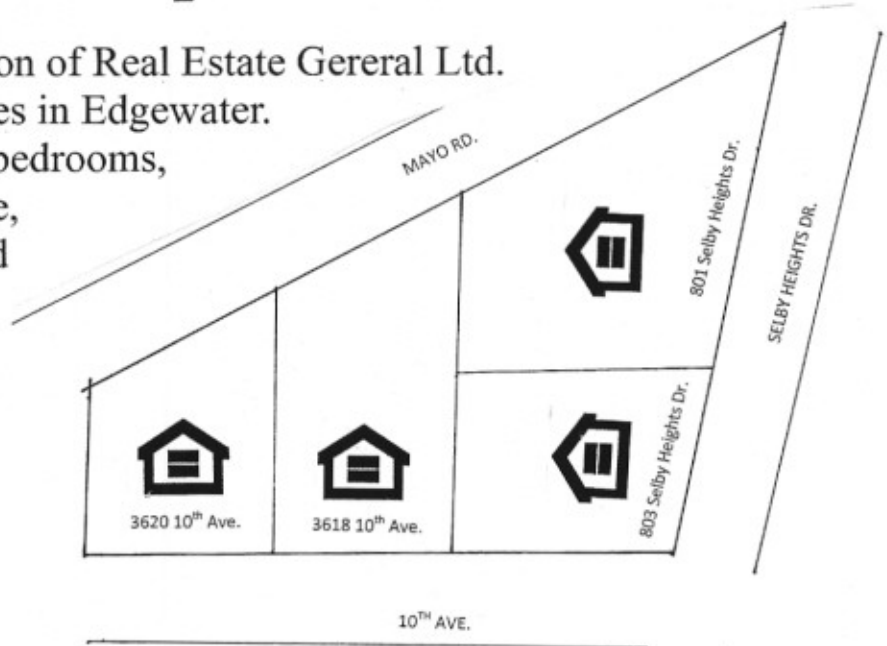
January 2009

# Selby on the Bay

## Four New Homes

### From \$395,900

Local builder Jim Robinson of Real Estate General Ltd. is building four new homes in Edgewater. Each home features four bedrooms, two and half baths, garage, paved driveway, upgraded kitchens with granite counter tops, high speed cable wiring, and special financing of 4 7/8% to qualified buyers.



**For a copy of house plans and available features contact:**



**KERRY  
MUSE**  
REALTOR®

Re/Max Leading Edge  
410.956.3500  
410.798.4455