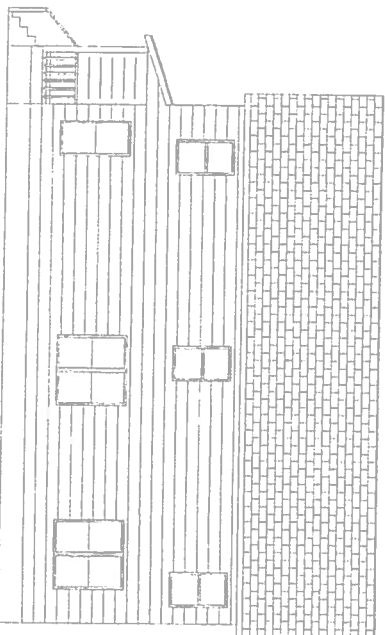
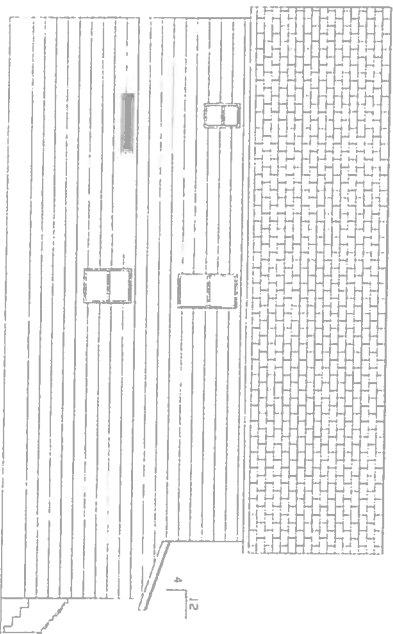


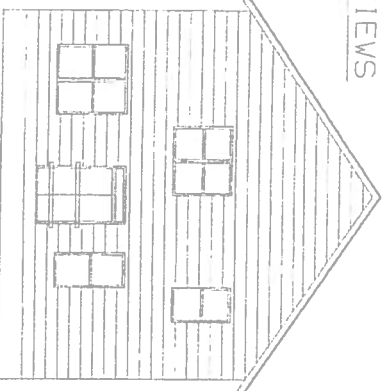
FRONT VIEW



RIGHT VIEW



LEFT VIEW



REAR VIEW

ELEVATION VIEWS

SCALE: 1/8" = 1'
 1 32X56F08, DVG 1
 05/12/22

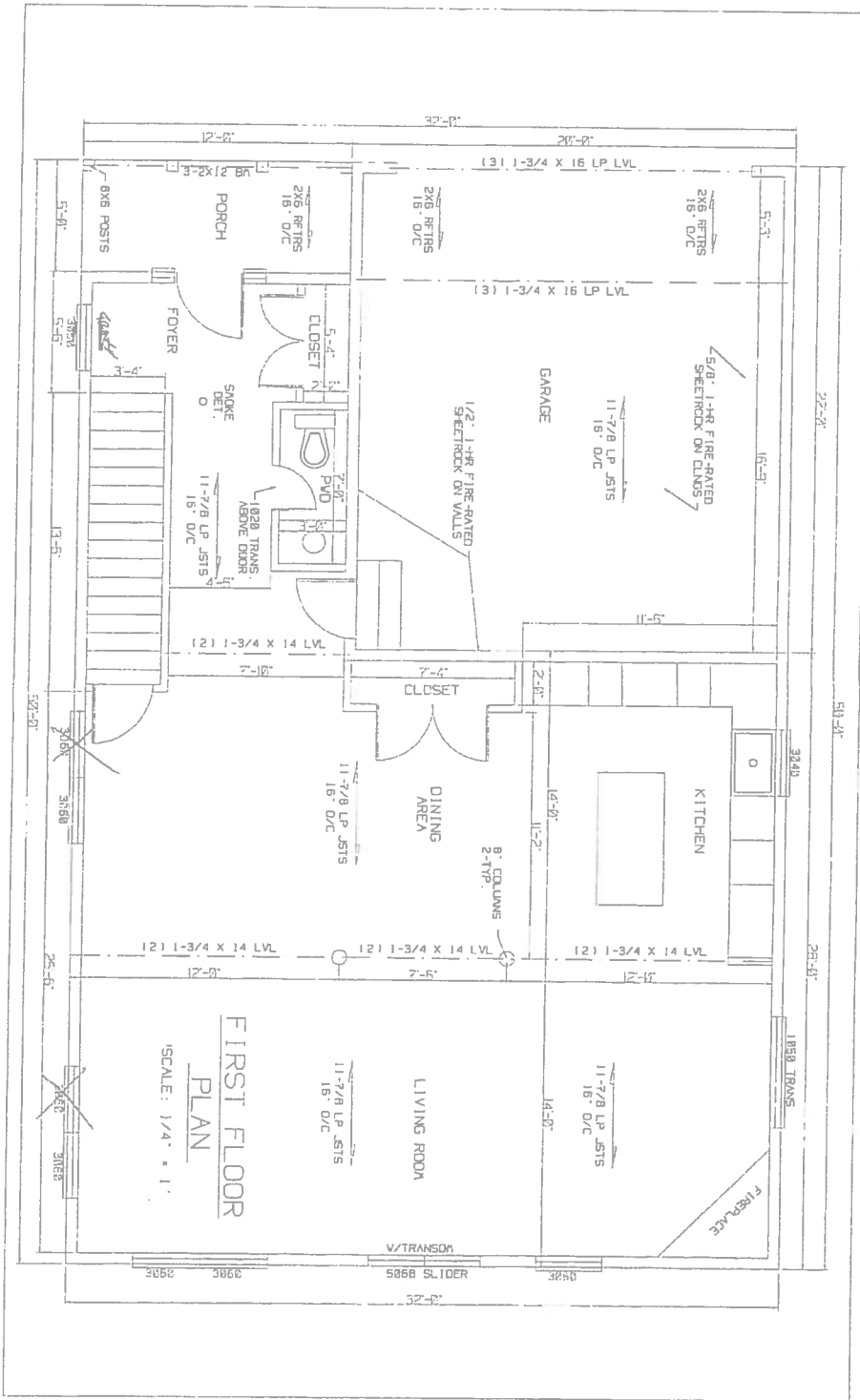
APPROVED

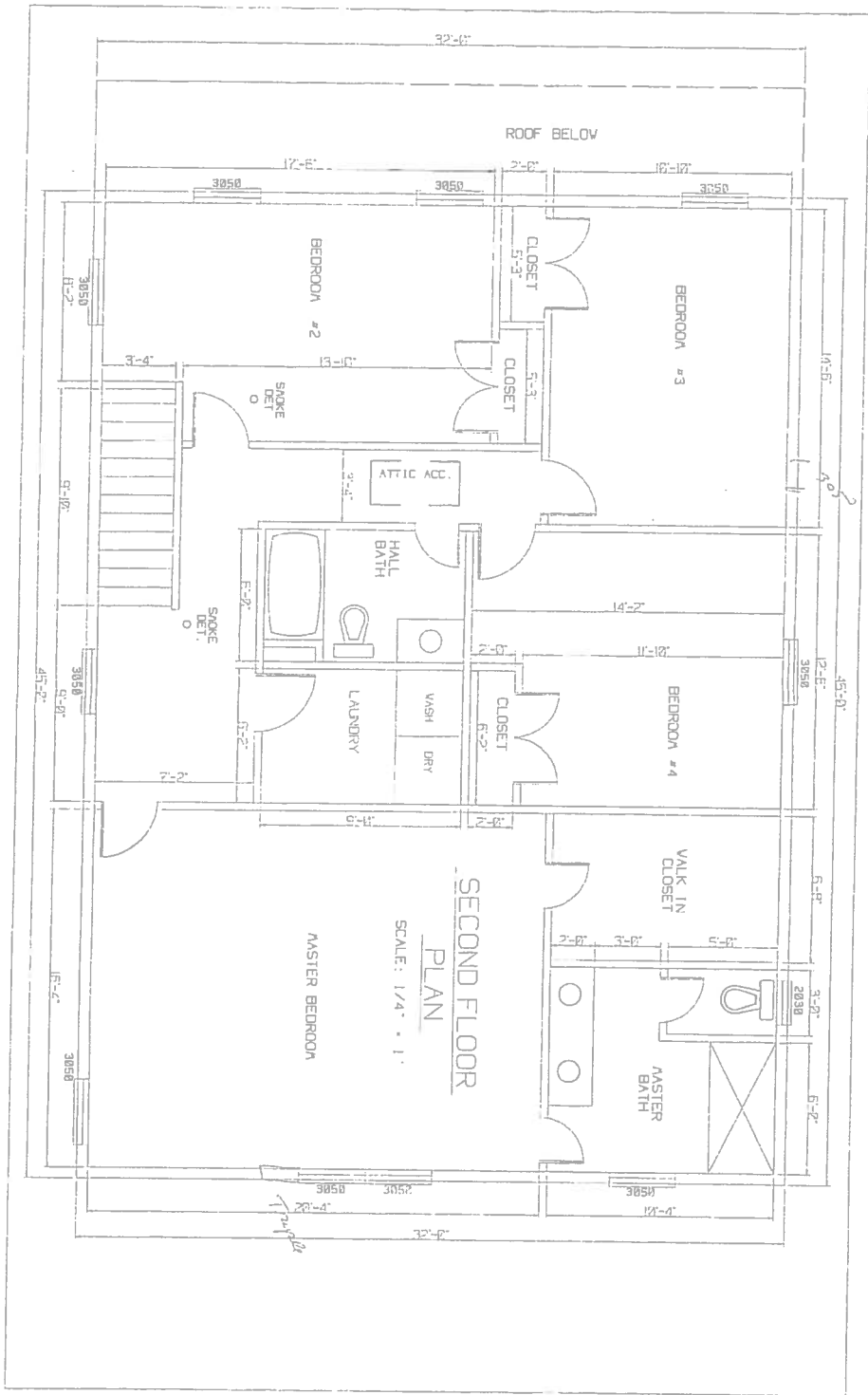


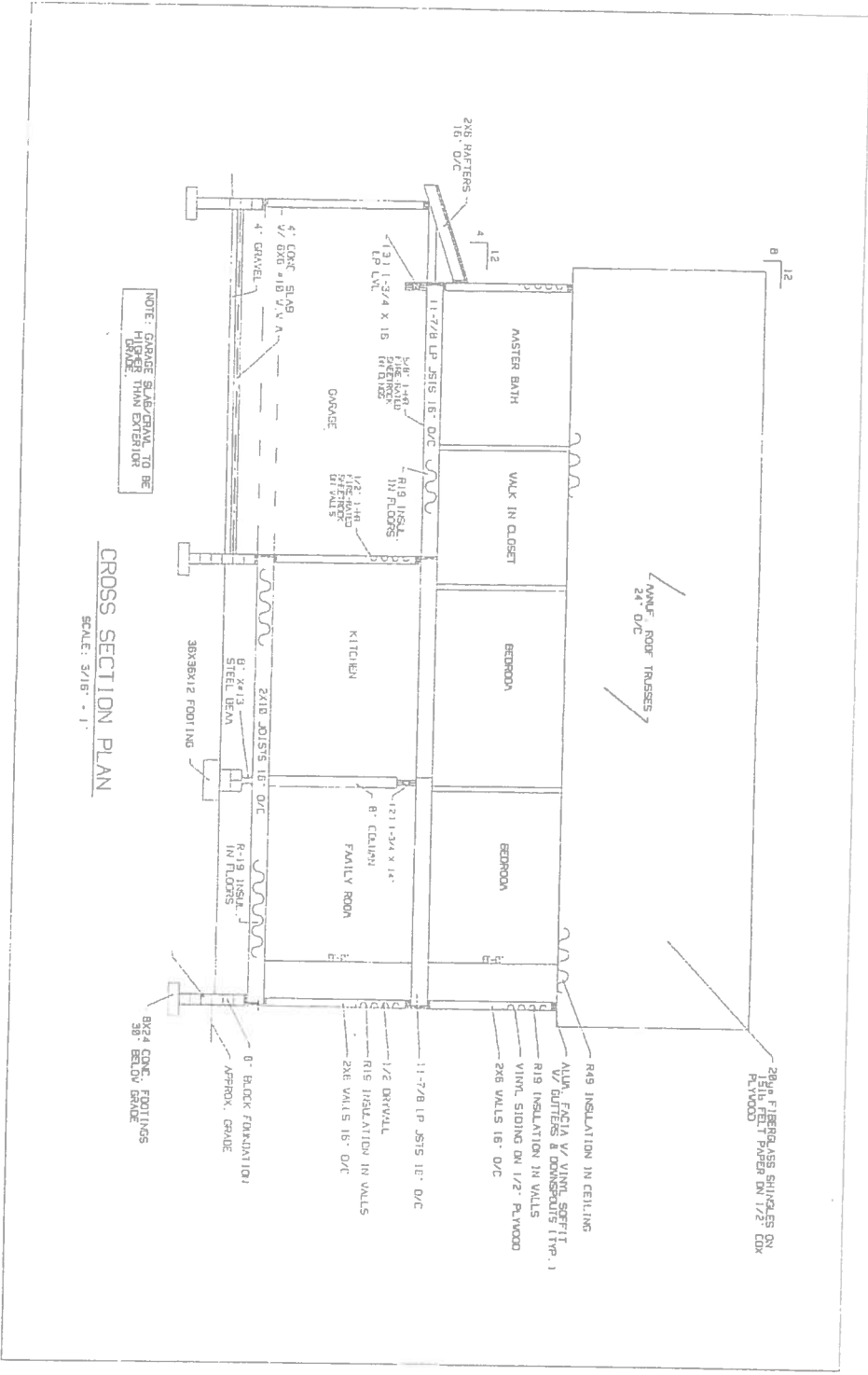
Date: July 19, 2022
 Approved subject to applicable codes, comments and final field inspection.
 Fire/Building Plans Reviewer
 Permit Center

JTC

Get Home Rank on for as possible maybe 30' 25'







NOTE: GARAGE SLAB/CHAL TO BE FINISHED WITH EXTERIOR FINISH

CROSS SECTION PLAN

SCALE: 3/16" = 1'

2x8 FIBERGLASS SHINGLES ON 24" O/C PLYWOOD

MANUF. ROOF TRUSSES 24" O/C

R49 INSULATION IN CEILING

ALUM. FACIA V. VINYL SCOFFIT DOORS & DOWNSPOUTS TYP. 1

R19 INSULATION IN WALLS

VINYL SIDING ON 1/2" PLYWOOD

2x6 WALLS 16" O/C

11-7/8 LP JSIS 16" O/C

1/2 DRYWALL

R15 INSULATION IN WALLS

2x6 WALLS 16" O/C

8" BLOCK FOUNDATION APPROX. GRADE

8x24 CONC. FOOTINGS 36" BELOW GRADE

8-1/8 INSUL. JOISTS 16" O/C

8" 2x13 STEEL BEAM

2x10 JOISTS 16" O/C

4" CONC. SLAB 4" GRAVEL

1/2 4x8 18" V.V. A

11-7/8 LP JSIS 16" O/C

1/2 1-3/4 x 18 FIBERGLASS FLOORING

1/2 1-3/4 x 18 FIBERGLASS FLOORING

1/2 1-3/4 x 18 FIBERGLASS FLOORING

1/2 1-3/4 x 18 FIBERGLASS FLOORING

1/2 1-3/4 x 18 FIBERGLASS FLOORING

1/2 1-3/4 x 18 FIBERGLASS FLOORING

1/2 1-3/4 x 18 FIBERGLASS FLOORING

1/2 1-3/4 x 18 FIBERGLASS FLOORING

1/2 1-3/4 x 18 FIBERGLASS FLOORING

1/2 1-3/4 x 18 FIBERGLASS FLOORING

1/2 1-3/4 x 18 FIBERGLASS FLOORING

1/2 1-3/4 x 18 FIBERGLASS FLOORING

1/2 1-3/4 x 18 FIBERGLASS FLOORING

1/2 1-3/4 x 18 FIBERGLASS FLOORING

1/2 1-3/4 x 18 FIBERGLASS FLOORING

1/2 1-3/4 x 18 FIBERGLASS FLOORING

1/2 1-3/4 x 18 FIBERGLASS FLOORING

1/2 1-3/4 x 18 FIBERGLASS FLOORING

1/2 1-3/4 x 18 FIBERGLASS FLOORING

1/2 1-3/4 x 18 FIBERGLASS FLOORING