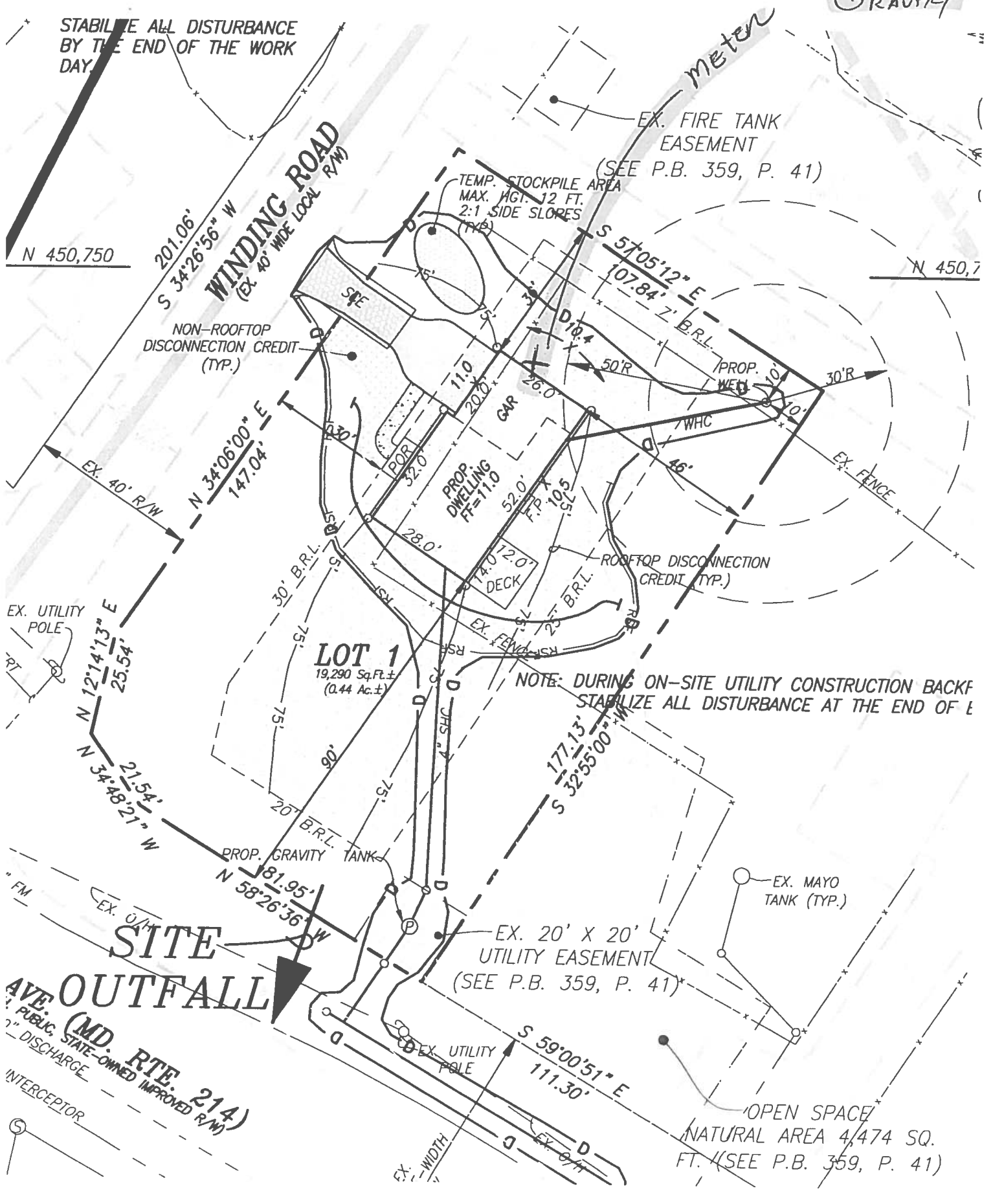


907 Winding Road

GRAVITY

STABILIZE ALL DISTURBANCE BY THE END OF THE WORK DAY.



N 450,750

N 450,7

WINDING ROAD
(EX. 40' WIDE LOCAL R/W)

NON-ROOFTOP
DISCONNECTION CREDIT
(TYP.)

EX. FIRE TANK
EASEMENT
(SEE P.B. 359, P. 41)

TEMP. STOCKPILE AREA
MAX. HGT. 12 FT.
2:1 SIDE SLORES
(TYP.)

EX. 40' R/W
N 34°06'00" E
147.04'

EX. UTILITY POLE
N 12°14'13" E
25.54'
N 34°48'21" W
21.54'

LOT 1
19,290 Sq.Ft.±
(0.44 Ac.±)

NOTE: DURING ON-SITE UTILITY CONSTRUCTION BACKFILL
STABILIZE ALL DISTURBANCE AT THE END OF E

PROP. GRAVITY TANK
N 58°26'36" W
81.95'

EX. 20' X 20'
UTILITY EASEMENT
(SEE P.B. 359, P. 41)

SITE
OUTFALL

AVE. (MD. RTE. 214)
PUBLIC STATE-OWNED IMPROVED R/W
7" DISCHARGE
INTERCEPTOR

EX. UTILITY POLE
S 59°00'51" E
111.30'

OPEN SPACE
NATURAL AREA 4,474 SQ.
FT. (SEE P.B. 359, P. 41)

EX. WIDTH